
Product datasheet

HO 49 W/840

LUMILUX T5 HO | Tubular fluorescent lamps 16 mm, high output, with G5 base



Product datasheet

Technical data

Electrical data

Nominal current	0.26 A A
-----------------	----------

Photometrical data

Luminous flux at	4800 lm
Light color (designation)	LUMILUX Cool White
Rated LLMF at 2,000 h	0.95
Rated LLMF at 4,000 h	0.93
Rated LLMF at 6,000 h	0.92
Rated LLMF at 8,000 h	0.9
Rated LLMF at 12,000 h	0.9
Rated LLMF at 16,000 h	0.9
Rated LLMF at 20,000 h	0.89
Luminous flux	4800 lm

Dimensions & weight



Tube diameter	16 mm
Length with base excl. base pins/connection	1449 mm
Product weight	116.45 g
Overall length	1463.20 mm

Lifespan

Service life	19000 h
--------------	---------

Additional product data

Mercury content	2.0 mg
-----------------	--------

Product datasheet

Product remark	Suitable for ECG operation only Lamp designed for internal luminaire temperatures of 30...40 °C; optimum luminous flux achieved at 35 °C
Appropriate disposal acc. to WEEE	Yes
Successor EAN	4050300796710
Predecessor EAN	4050300657134

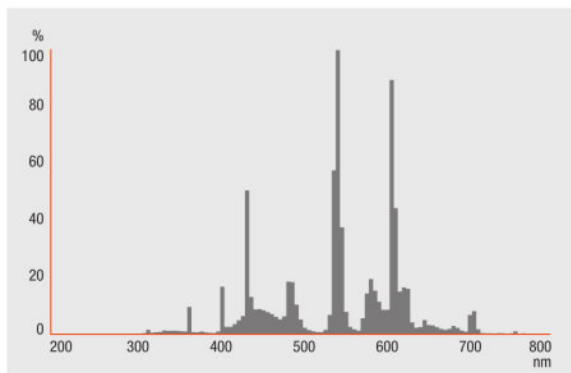
Certificates & standards

Energy efficiency class	F
Energy consumption	50.00 kWh/1000h

Environmental information

Information according Art. 33 of EU Regulation (EC) 1907/2006 (REACH)	
Date of Declaration	18-04-2022
Primary Article Identifier	4050300796710 4050300657134
Declaration No. in SCIP database	In work

Light Distribution

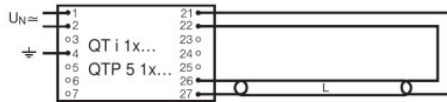


FL_840

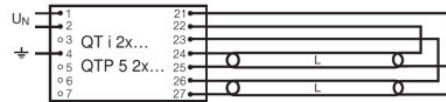
Product datasheet

System guarantee

OSRAM System+ Guarantee in combination with OSRAM ECGs



QUICKTRONIC INTELLIGENT QT i 1x QTP 5 1x



QUICKTRONIC INTELLIGENT QT i 2x QTP 5 2x

Ecodesign regulation information:

Separate control gear and light sources must be disposed of at certified disposal companies in accordance with Directive 2012/19/EU (WEEE) in the EU and with Waste Electrical and Electronic Equipment (WEEE) Regulations 2013 in the UK. For this purpose, collection points for recycling centres and take-back systems (CRSO) are available from retailers or private disposal companies, which accept separate control gear and light sources free of charge. In this way, raw materials are conserved and materials are recycled.

Logistical Data

Product code	Product description	Packaging unit (Pieces/Unit)	Dimensions (length x width x height)	Volume	Gross weight
4050300657134	HO 49 W/840	Shipping carton box 40 Pieces Sleeves	1500 mm x 93 mm x 194 mm	27.06 dm ³	6258.00 g
4050300796710	HO 49 W/840	Shipping carton box 20 Pieces Sleeves	1482 mm x 83 mm x 104 mm	12.79 dm ³	3450.00 g

The mentioned product code describes the smallest quantity unit which can be ordered. One shipping unit can contain one or more single products. When placing an order, for the quantity please enter single or multiples of a shipping unit.

References / Links

For more information on the system guarantee and the terms and conditions of the guarantee visit <https://>

▶ www.inventronics-light.com/multilevel-guarantees

Product datasheet

Disclaimer

Subject to change without notice. Errors and omission excepted. Always make sure to use the most recent release.

OSRAM is distribution partner
of LEDVANCE of LAMPS

OSRAM

OSRAM GmbH
Marcel-Breuer-Strasse 6
80807 Munich, Germany

HO 49 W/840

LUMILUX T5 HO | Tubular fluorescent lamps 16 mm, high output, with G5 base

Product name	Product name ECG	EAN	Nominal current	Nominal wattage + Power loss	Power factor λ [PIM]	Luminous flux at 35 °C
HO 49 W/840	QT-FIT 5 1x49	4008321832139	0.24 A	54.00 W	0.98	4300 lm
	QT-FIT 5 2x49	4008321832153	0.47 A	106.00 W	0.98	4300 lm
	QTi 1x28/54/35/49 GII	4008321383358	0.24 A	53.00 W	0.97	4300 lm
	QTi 1x35/49/80 GII	4008321383372	0.24 A	53.00 W	0.97	4300 lm
	QTi 2x28/54/35/49 GII	4008321383419	0.46 A	105.00 W	0.98	4300 lm
	QTi 2x35/49/80 GII	4008321658951	0.45 A	105.00 W	0.99	4300 lm
	QTi DALI 2x35/49 DIM	4050300870403	0.45 A	103.60 W	0.99	4300 lm
	QTP5 1x49	4008321329370	0.24 A	53.00 W	0.95	
	QTP5 1x49	4008321329370	0.24 A	53.00 W	0.95	4300 lm
	QTP5 2x49	4008321329431	0.49 A	106.00 W	0.99	
	QTP5 2x49	4008321329431	0.49 A	106.00 W	0.99	4300 lm

Product name	Product name ECG	EAN	Number of lighting outlets
HO 49 W/840	QT-FIT 5 1x49	4008321832139	1
	QT-FIT 5 2x49	4008321832153	2
	QTi 1x28/54/35/49 GII	4008321383358	1
	QTi 1x35/49/80 GII	4008321383372	1

Product datasheet

Product name	Product name ECG	EAN	Number of lighting outlets
	QTi 2x28/54/35/49 GII	4008321383419	2
	QTi 2x35/49/80 GII	4008321658951	2
	QTi DALI 2x35/49 DIM	4050300870403	2
	QTP5 1x49	4008321329370	1
	QTP5 1x49	4008321329370	1
	QTP5 2x49	4008321329431	2
	QTP5 2x49	4008321329431	2